



KAHYA

HOTEL
★★★★

**SÜRDÜRÜLEBİLİRLİK
EL KİTABI**

**SUSTAINABILITY
MANUAL**

AUGUST 2025

TÜRKİYE CUMHURİYETİ



FOUNDATION OF THE REPUBLIC OF Türkiye

After the National War of Independence that started on May 19, 1919, the First Grand National Assembly of Turkey convened on April 23, 1920 under the leadership of Mustafa Kemal Atatürk.

With the adoption of the first constitution on January 20, 1921, "Sovereignty belongs to the nation unconditionally. Executive and legislative powers are gathered in the Turkish Grand National Assembly on behalf of the Turkish nation.

On April 23, 1921, on the first anniversary of the opening of the Turkish Grand National Assembly, with the law numbered 112, 23 April was declared a national holiday.

The Republic was proclaimed on October 29, 1923.

MUSTAFA KEMAL ATATÜRK

(1881-1938)



ATATÜRK, FOUNDER AND FIRST PRESIDENT OF THE REPUBLIC OF Türkiye

He was born in Thessaloniki in 1881. Her mother is Zübeyde Hanım and her father is Ali Rıza Efendi. He went to the Neighborhood School, Şemsi Efendi School, Thessaloniki Civil High School, Thessaloniki Military High School, Thessaloniki Military High School, the Military Academy and the War Academy, respectively. While he was studying at the Military High School in 1893, he was named Mustafa Kemal by adding "Kemal" to his name by his mathematics teacher.

When the Ottoman Empire was defeated in the First World War, the Armistice of Mudros was signed. Upon the start of the occupation of the homeland in accordance with this treaty, Mustafa Kemal went to Samsun on 19 May 1919 and started the national struggle.

Mustafa Kemal was elected to the Presidency of the Assembly and Government with the opening of the Turkish Grand National Assembly on April 23, 1920. After the Battle of Sakarya was won, he was honored with the title of Veteran and the rank of Marshal. Mustafa Kemal became the first President of the Republic of Turkey with the proclamation of the republic on October 29, 1923.

KAHYA HOTEL



KAHYA HOTEL

In the 1960s, we made our first investment in the service sector by building the 25-room Ankara Palas hotel, one of the first city hotels in Alanya. As you know, vision is the desire and will to capture the reality of the future. And with this vision, we, as Kahyaoglu Company, built the 80-room Kahya Hotel in 1988. We built our second building in 1991 and our third building with 250 rooms in 2003. After the major renovation started in 2022 in our hotel, we reopened on 20.04.2023. We have made it our mission to grow in the service sector, to have a permanent place in the sector, to provide added value and employment to our country and our sector.

With our 100% Customer Satisfaction target;

- We believe in the value of having permanent guests, and we look at the long-term friendship between us and our guests.
- We think for our guests and try to produce solutions that are suitable for our guests' needs and demands.
- With the awareness that the other name of tourism is the service sector, we determine our operating principles and goals, and we are proud to serve our guests with this sensitivity.

Vision: To be a respected and leading tourism facility that has made a name for itself in the sector, does not compromise on service quality, constantly creates difference and adds value in a way that suits its different design, and is taken as an example by its competitors.

Mission: Being aware of the ethical values and social responsibility that reaches them with a quality service by understanding the wishes and expectations of the guests in the best way, it is a business that is sustainable at 5-star facility standards and puts guest satisfaction above everything else.

OUR QUALITY, ENVIRONMENTAL AND FOOD SAFETY POLICY

Kahya Hotel aims to be one of the first preferred hotels in its region with its continuous in-service trainings and the different perspective it adds to hotel management.

It is our first priority to consider environmental issues while reaching our goal, to reduce the negative effects on the environment, and to raise environmental awareness by using resources carefully.

In line with these purposes, our guest-oriented service approach, which we have created by constantly improving our processes and systems according to the requirements of the age, with the voluntary participation of all our employees, under the leadership and responsibility of the senior management, has become a philosophy.

As a result, we have taken the following principles as a basis in all our activities;

Being responsible for quality with all our managers and employees

Working in compliance with laws and regulatory requirements

Constantly monitoring our checkpoints to realize safe food production

Relying on the support and productivity of our employees

To provide access to contemporary quality values and customer satisfaction at every level of the service provided.

To act according to the principle of "continuous improvement" in all works

Increasing our skills and quality awareness through education

To increase family awareness by considering the happiness of our employees

Organizing activities for the environment, participating in activities, inviting our guests to our activities

Evaluating the performance of our suppliers and communicating with them in order to ensure the continuity of our product quality

To respect and support society and the environment.

General manager

MAP

From Our Hotel

- Cable Car 200 m
- Damlataş Cave 450 m
- Alanya Kızilkule 1,5 km
- Alanya Castle 1,4 km
- Dim Çayı 13 km
- Sapadere Canyon 29 km
- Manavgat Waterfall 56 km
- Side Ancient City 59 km
- Aspendos Antique Theater 85 km
- Antalya Kaleiçi 120 km

ALANYA CABLE CAR



ECOLOGICAL TRANSPORTATION

Alanya Cable Car offers an “ecology-sensitive transportation” with its technology elegantly placed in nature. At every stage of its construction and operation, great care is taken to protect the environment and consume natural resources economically. It contains all the advantages of ecological transportation vehicles. Designed to operate in all weather conditions, the Alanya Cable Car system can continue to operate uninterruptedly in conditions such as rain, wind and high temperatures.

You can reach the Cable Car in Damlataş by walking from our hotel.

DAMLATAŞ CAVE



DAMLATAŞ CAVE

Damlataş Cave was discovered in 1948 during the quarrying for the stone to be used in the construction of the port. The cave is on the west coast of the historical peninsula. The stalactites and stalagmites of the cave, which is located in the semi-crystalline limestone, were formed in 15 thousand years. The cave was named "Damlataş" because of the water drops that continue to drip from the stalactites. A favorite of local and foreign tourists, Damlataş Cave is famous for its enchanting beauty as well as its air that is good for asthma patients. The atmosphere of the cave does not change in summer or winter; temperature is 22 degrees Celsius, humidity is 95 percent, constant pressure is 760 mm. The air of the cave contains 71 percent nitrogen, 20.5 percent oxygen, 2.5 percent carbon dioxide and some radioactivity and ions. There is an entrance fee to the cave. There is a small bazaar around it, and in front of it is the beach.

You can reach Damlataş Cave by walking from our hotel.

ALANYA RED TOWER



ALANYA KIZILKULE

Kizilkule, a unique example of the 13th century medieval Mediterranean defense structures; It was built by the builder Ebu Ali Reha el Kettani from Aleppo by the Seljuk ruler I. Alaaddin Keykubat in order to protect the port, shipyard and Alanya Castle against attacks from the sea. On the outer north wall of the building, there is a four-line construction inscription written on the name of Alaaddin Keykubat at a height of 10 m and below it, indicating the date of construction as April 1226, and another construction inscription on the southern wall. Having an octagonal plan, Kizilkule has a complex interior plan, contrary to its plain exterior. Red Tower; It has five floors: ground floor, first floor, mezzanine, open floor and open terrace.

You can reach Kizilkule by walking in front of our hotel.

ALANYA CASTLE



Alanya Castle is one of the symbols of Antalya's town Alanya. It is located on a peninsula rising approximately 250 meters from the sea. The total length of its walls is 6.5 kilometers. The castle was built in the Hellenistic period in the settlement of Alanya, which was called Kandeleri in the old times. The history of the castle, whose historical texture is the work of the 13th century Seljuk, goes back to the Hellenistic period. The castle was built by the Seljuk Sultan I. Alaeddin Keykubat, who took the city and had it rebuilt in 1221.

Transportation is provided by the cable car, which is within walking distance across our hotel.

DİM ÇAYI



DİM ÇAYI

Dimayı originating from the Taurus Mountains follows a course of approximately 60 kilometers. Its water, which is cold in summer and winter, is an ideal place for those who want to escape from the sweltering heat of the Mediterranean, especially in summer. There are many restaurants and tea gardens that open to the parallel road. These restaurants continue after the regulator, which is about 7-8 kilometers away from the main road. The common feature of the restaurants and picnic areas here is the tables thrown into the tea. The upper parts of the stream are used for rafting purposes.

Transportation is provided by taking the Alanya buses passing through the main street on the north side of our hotel, getting off at the last stop and taking the buses that write Dimayı.

SAPADERE CANYON



The canyon, which is built between the fierce Taurus Mountains, is surrounded by high mountains on 3 sides and is 750 meters long. The canyon, which is 400 meters high from the sea, is 10-15 meters wide on average and is surrounded by karst rocks of 150-200 meters in circumference. Since its water comes out of the rocks of the Taurus Mountains, it is cold and has plenty of oxygen.

The canyon, which was put into service in 2008, was built on steel construction with wooden platform walkways in order to make it easy to visit, and some areas were protected with wire for security. The walk, which starts with a slight slope from the entrance of the canyon, gives even more pleasure with 10-15 degree ramps from time to time.

After getting off at the last stop, you can take the Alanya buses that pass in front of our hotel and continue by taxi. Public transport does not go to this area.

SIDE ANCIENT CITY



Side ancient city BC. It is located in one of the most important settlements in history, which was established in the 7th century. This historical city, which belongs to the Pamphylia region, entered the first empire Lydian Kingdom and remained in this reign for many years. Later, the ancient city of Side, which passed to the Persian Kingdom, passed to the King of Macedonia with Alexander the Great's request for the region.

The ancient city can be reached by taking the Manavgat buses from the main street on the north side of our hotel and by taking the Side minibuses from the city center.

ASPENDOS ANCIENT THEATER



Aspendos is famous for having the best preserved Roman theater not only in Anatolia but also in the entire Mediterranean world. The city was founded on a hill plain near one of the largest rivers of the region, Köprüçay (Ancient Eurymedon). Today, theaters and waterways are mostly visited in Aspendos, which owes its transportation and development to the Mediterranean Sea to the nearby river and therefore to the fertile lands around it.

From the main street on the north side of our hotel, you can go to the bus station, take the Antalya buses, go to Serik, and from there, transportation is provided by minibuses going to Aspendos.

MANAVGAT WATERFALL



Manavgat Waterfall is a waterfall located on the Manavgat River in the Manavgat district of Antalya. Although it is poured from a small height, it flows with a high flow over a large area.

From the main street on the north side of our hotel, you can go to the bus station and take the Antalya buses and go to Manavgat.

ANTALYA KALEİÇİ



Antalya Kaleiçi is protected by two thick horseshoe-shaped walls. One of these fortification walls is in the seaside bay and the other is on the land side. In addition to these walls, there are also walls separating the various settlements from each other, and on the outer walls there is a tower at about fifty steps. Narrow streets inside the city walls stretch up from the harbor along the wall. Yivli Minaret, Keyhüsrev Madrasa, Karatay Madrasa, İskele Mosque, Tekeli Mahmut Paşa Mosque are just some of the important historical monuments inside the city walls.

From the main street on the north side of our hotel, you can go to the bus station and take the Antalya buses and reach the Kale inside with the Antalya city buses.

HADRIAN'S GATE



It is one of the best preserved historical buildings in Antalya. The building, which is a Roman work, was built in 130 AD on behalf of the Roman Emperor Hadrian. Over time, the city walls closed the outer part of the door and the door was not used for many years. Perhaps this is one reason why the work has survived to the present day without being destroyed. The gate was unearthed after the ruins of the city walls were demolished. It is considered to be the most beautiful gate of Pamphylia. There are three openings, the upper parts of which are dome-shaped. It is entirely made of white marble, except for its columns. Carving and relief decorations are very beautiful.

From the main street on the north side of our hotel, you can go to the bus station and take the Antalya buses to reach Kale by city buses.

HOW TO GO?

ALANYA İSKELE - KIZILKULE

It is about 20 minutes walk from our hotel.

ALANYA CASTLE

It can be reached by the Damlataş Cable Car opposite our hotel. You can also go to the Castle by walking for 1 hour from our hotel.

MANAVGAT - SİDE

You can reach the center of Manavgat and Side in 1.5 hours by using the public transportation vehicles passing through the main street in front of our hotel.

ANTALYA

You can reach Antalya center in 2.5 hours by using the public transportation vehicles passing through the main street in front of our hotel.

AIRPORT

Our hotel guests can reach Antalya airport in 2 hours with the transfer vehicles of their own agencies.

Our hotel guests can reach Gazipasa airport in 60 minutes with the transfer vehicles of their own agencies.

ALANYUM

From the stops on the main street to the north of our hotel, you can use public transport to get off at the center of Alanya first, and then get on the bus again to reach Alanyum shopping center.

***** Public transportation in settlements is provided by Supervised City Minibuses for a fee or with city cards for Municipal Buses.**

***** If our guests wish, they can take advantage of the taxi service at the taxi stands located near our hotel.**

BAZAARS

MONDAY BAZAAR

You can reach the Monday market in Alanya Oba in approximately 15 minutes by using public transportation from the stops on the main street to the north of our hotel. (Next to Oba Göl Mevkii Hacıkadir Street Hacıkadirođlu Primary School)

TUESDAY BAZAAR

It is established on Tuesdays next to Alanya Vegetable and Fruit Market (Alanya Market) and Alanya Fish Market. It is 15 minutes walking distance from our hotel. It is quite a large market place; In addition to fruit and vegetables, there are also all kinds of clothes, clothing, shoes, glassware and souvenirs.

WEDNESDAY BAZAAR

THURSDAY BAZAAR

You can get off in front of the Cumhuriyet Police Station in Alanya Tosmur by using public transport from the stops on the main street to the north of our hotel. Thursday Market is established in this region.

FRIDAY BAZAAR

You can reach the Friday market by getting off at the minibus stop in Alanya Center in approximately 15 minutes by using public transport from the stops on the main street to the north of our hotel. The biggest market place of Alanya is Friday Market. In addition to fruit and vegetables, there are also all kinds of clothes, clothing, shoes, glassware and souvenirs in the Friday market.

SATURDAY BAZAAR

SUNDAY BAZAAR

You can reach the Sunday market after the main street in the north of our hotel. It is established starting from a little higher than Hacet Square. Generally, vegetables and fruits are in weight, and there are many various products such as clothing, clothes, and glassware.

CULTURAL INFORMATION



TURKISH TEA

A kind of black tea is produced in Turkey and it grows on the eastern Black Sea coast. This type of tea is also called "Turkish tea" among the people. The powder is brewed with roasted black tea and served in distinctive small glasses known as "thin waist".

CULTURAL INFORMATION



TURKISH COFFEE

Turkish coffee is one of the oldest coffee preparation and cooking methods that has survived from the Ottoman Empire, which has an important place in Turkish culture. It has a unique identity and tradition with its unique taste, foam, smell and presentation style. It is the only type of coffee served with its grounds.

Turkish coffee culture and tradition has been registered on the UNESCO Intangible Cultural Heritage of Humanity List on behalf of our country as of 2013.

CULTURAL INFORMATION



AYRAN

It is a type of drink obtained by adding water to yoghurt. It is one of the most common drinks belonging to Turkish cuisine.

Göktürks, who ruled between 552-745 AD, added water to yoghurt to reduce its sourness. Thus, ayran came into being by chance.

The word ayran was defined for the first time in history as "a drink obtained from milk" in the work *Divan-ı Lügat-it Türk*.

CULTURAL INFORMATION



GÖZLEME (PANCAKE)

Flatbread is a kind of aperitif Turkish pastry prepared by cooking thinly rolled yufa with various stuffing and then cooking on a sheet metal over wood fire.

“Közmen”, which means bread baked on embers during the Seljuk period, is one of the first idioms used to mean pancake. Due to the evolution of the spoken language over time and the changing local dialects, it changed and took the name of pancake.

CULTURAL INFORMATION



TURKISH BATH

There has been a bath culture in Anatolia since ancient times. While the Turks lived in Central Asia, they carried their bath traditions to Anatolia, where they migrated. They placed their own traditions on the marble bath culture left by those who lived before them. In time, the places where very special days were celebrated became the baths.

Even today, "bride bath", "maternity bath", "baby's forty bath", "votive bath", "mourning bath" for women, "groom bath", "circumcision bath", "soldier's bath" and "soldier bath" for men. festive bath" is still up to date.

CULTURAL INFORMATION



HACIVAT KARAGÖZ

Karagöz and Hacivat is a shadow play based on imitation and conversation, played on a screen with two-dimensional depictions. Karagöz player is called fictional, imaginary. Change the conversation in the game is done with head movements.

It is not known for certain whether these two characters actually lived, and if they did, where and how they lived. The stories are based on rumor, because even if they actually lived, they probably did not find it important enough to enter the history books in the mentioned period.

CULTURAL AND NATURAL HERITAGE



SEA TURTLE

Caretta caretta, which never come ashore except to lay eggs, are in the category of endangered creatures. Large-headed sea turtle (*Caretta caretta*) and green sea turtle (*Chelonia mydas*) species lay eggs in the Mediterranean coast of Turkey. According to the results of the studies carried out in the Mediterranean from the past to the present, the most important nesting areas of the *Caretta caretta* species are Turkey and Greece.

ENDEMIC ANIMAL SPECIES



SEA TURTLE
Caretta Caretta



ANATOLIAN PARS
Pantera pardus tuttiana



ANADOLU MIFLON
Ovis orientalis anatolica



GELENĞİ
Citellus citellus



HOPA VIGER
Vipera kaznakovi



STEPPE LYNK
Felis caraca

CULTURAL AND NATURAL HERITAGE



SAND LILY (*Pancratium maritimum*)

Sand lily is a perennial, bulbous plant species that belongs to the Amaryllidaceae family and grows especially in Mediterranean dunes. Its homeland is the Mediterranean region. It is an endemic plant species. Penal sanctions are imposed on those who harm this plant in our country.

Sand lilies are usually seen in areas a few meters from the sea. Its leaves, which can reach 40 cm in length, resembling a long spear coming out of the bottom, do not shed in winter. Flowering time is between August and October.

ENDEMIC PLANT SPECIES



SAND LILY

Pancratium maritimum



TAURUS ORCHID

Himantoglossum Montis-tauri



BAYTOP CROCCUM

Colchicum Baytopiorum



PHASELIS HERCHAK

Lathyrus Phalitanus



SIDE MONSTER HERB

Orobanche Sideana



PERGE AIR MERCURY

Alkanra Macrophilla

MATTERS TO BE CONSIDERED WHEN VISITING LOCAL, HISTORICAL, ARCHAEOLOGICAL, CULTURAL, SPIRITUAL PLACES

Please do not participate in touristic activities involving animal abuse.

Please be environmentally friendly in the sightseeing areas.

In our country, cigarettes and alcoholic beverages are not sold to children under the age of 18.

In all areas except the beach, swimwear is not allowed, clothes are worn.

Do not take pictures of children without their parents' permission.

Before entering sacred areas such as mosques, shoes are removed and women cover their hair with a veil.

FOR OUR ENVIRONMENT



Our precious guests,

Choosing products that do not harm nature when it comes to the sprays, deodorants, perfumes, sunscreens and fly repellents you use for your personal care is the best investment for a sustainable environment.

If a sunscreen contains any of these ingredients, look for a marine life-safe alternative: Oxybenzone, Benzophenone-1, Benzophenone-8, OD-PABA, 4-Methylbenzylidene Camphor, 3-Benzylidene Camphor, nano-Titanium Dioxide, nano-Zinc Oxide, Octinoxate, Octocrylene.

EXPERIENCE THE LOCAL CULTURE



TURKISH NIGHT

All the special flavors of Turkey are presented to our guests at the "Turkish Night", which is held once a week in our hotel, and the Turkish Culinary Culture is introduced to our guests.

ÇEVREMİZİ KORUMAK İÇİN To Protect Our Environment



Consume less electricity!
Turn off and unplug unnecessary working devices.



Research it!
Find out where and how a food you eat is produced.



Change your habits!
Use cloth bags instead of plastic bags.



Notice them!
Put a bowl of water outside Street animals.



Less water Consumption!
Do not leave the water on all the while brushing your
teeth and washing your hands.



Observe it!
Identify single – use items and use them less.

ÇEVREMİZİ KORUMAK İÇİN To Protect Our Environment



Refresh it!
Before you buy a new one for your broken or damaged items, try to fix them.



Do not use!
Do not use disposable plastic straws.



Recycle it!
Dispose of your waste in appropriate recycling bins.



Respect nature!
Use less paper. Use both sides of the paper.



Plant saplings!
Germinate tree seed and plants the seedling you have grown into the ground.



Share it!
Leave unused clothes in the clothes collection boxes or share them with others.

ENERGY SAVINGS



90% of our facility's lighting is made of LED lights. The goal is to have 100% LED lighting.

All rooms have a system that disables the heating/cooling devices when the balcony door is opened.



Our hotel has 360 solar panels that generate electricity. 45% of our electricity consumption is produced by these panels.

Motion-sensitive sensor illuminators are used in general areas and staff areas.



General areas are designed to benefit from daylight for energy saving. We prefer energy efficient, environmentally friendly devices and technologies.

ENERGY SAVINGS



Exterior lighting is controlled by timers.

Electronic energy cards are used in all rooms.



LED televisions are used in our rooms.
Minibars are positioned away from heat sources to save energy.

The use of air conditioning devices is reduced by keeping the curtains of empty rooms closed in summer and open in winter.



Energy losses are minimized by performing periodic maintenance and cleaning of all electronic devices.

ENERGY SAVINGS



We have 92 solar panels to benefit from solar energy. We provide 40% energy savings in the water heating system.

The tires of cold rooms, deep mills, and refrigerators are checked and worn out tires are replaced, preventing energy losses.



Dishwashers, washing machines and dryers should not be operated unless they are fully loaded.

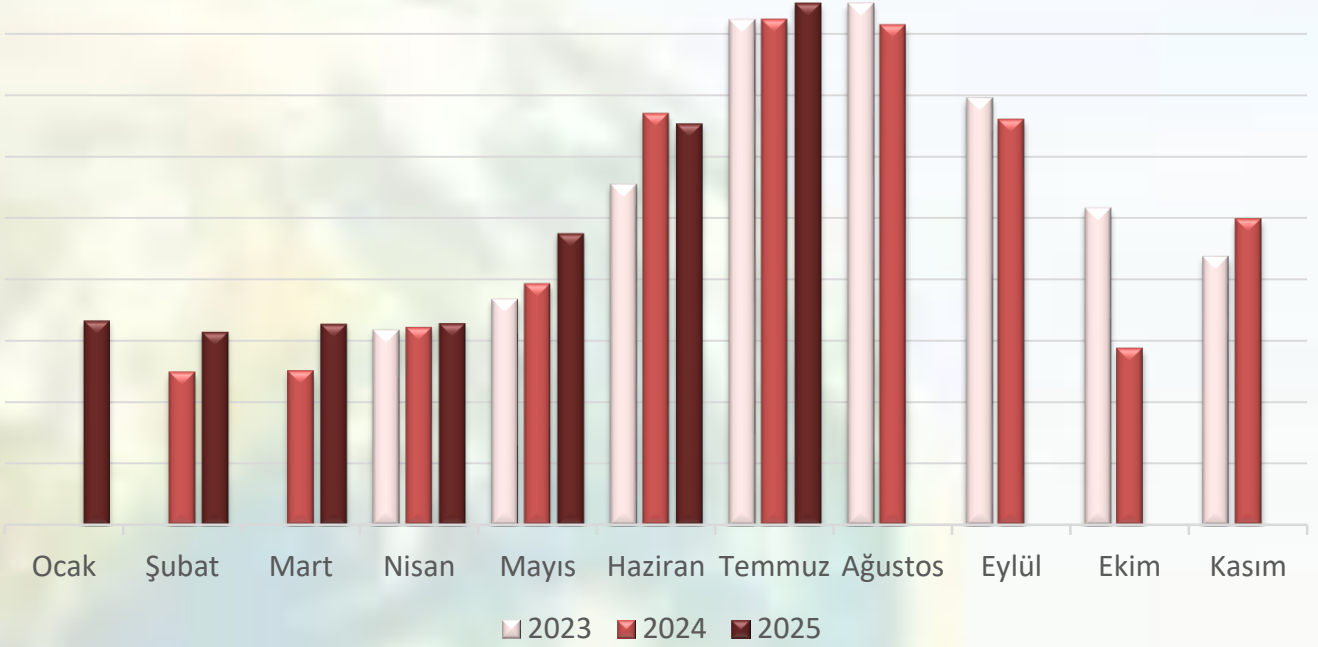
Our energy consumption is recorded and monitored on a monthly and annual basis.



Our staff is given training on savings measures, and our guests are informed about our savings practices.

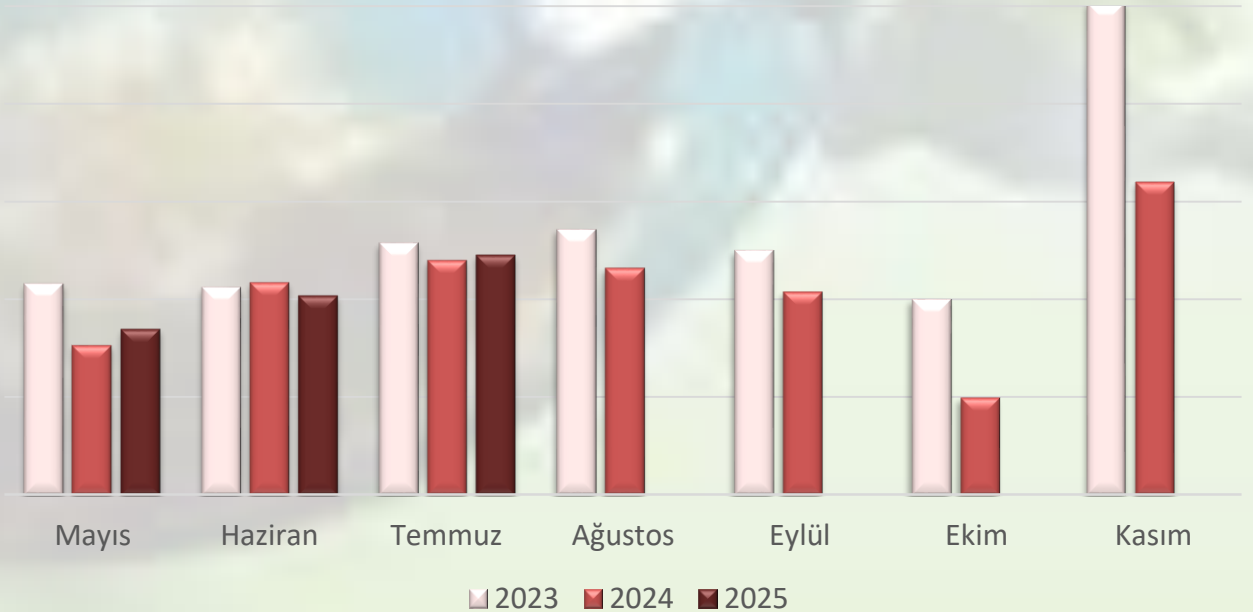
ENERGY SAVINGS

Electricity Consumption kWh 2023-2024-2025



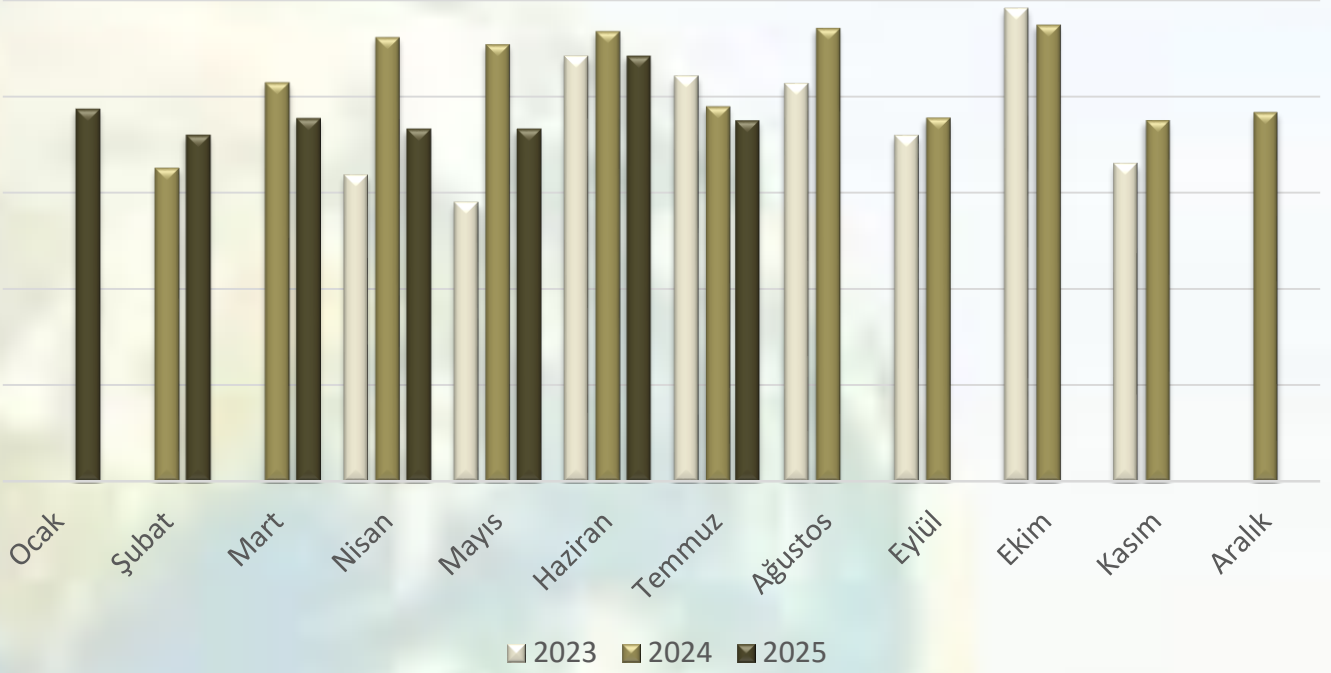
When March, April, May, June and July of 2025 and 2024 were compared, 20.28% savings per person were achieved compared to the previous year.

Electricity Consumption Per Person 2023-2024-2025



ENERGY SAVINGS

LNG Consumption Lt. 2023-2024-2025



When comparing April, May, June and July of 2025 and 2024, a saving of 17.68% per person was achieved compared to the previous year.

LNG Consumption Per Person 2023-2024-2025



SAVING WATER



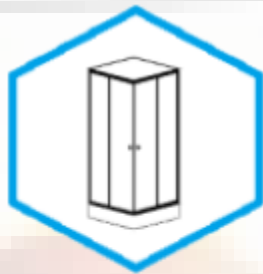
There are water-saving aerators in all rooms and common areas.



All WCs use economical 6 and 3 litre dual flush systems.



By choosing shower cabins instead of bathtubs, water savings are achieved.



When watering our garden, water losses are prevented by using drip and sprinkler systems.



SAVING WATER



Our employees are trained on water conservation. Our guests are informed about our conservation practices.

Wastewater is connected to the sewer system in accordance with the discharge regulations.



Photocell taps and sensor urinals are used in all general areas.

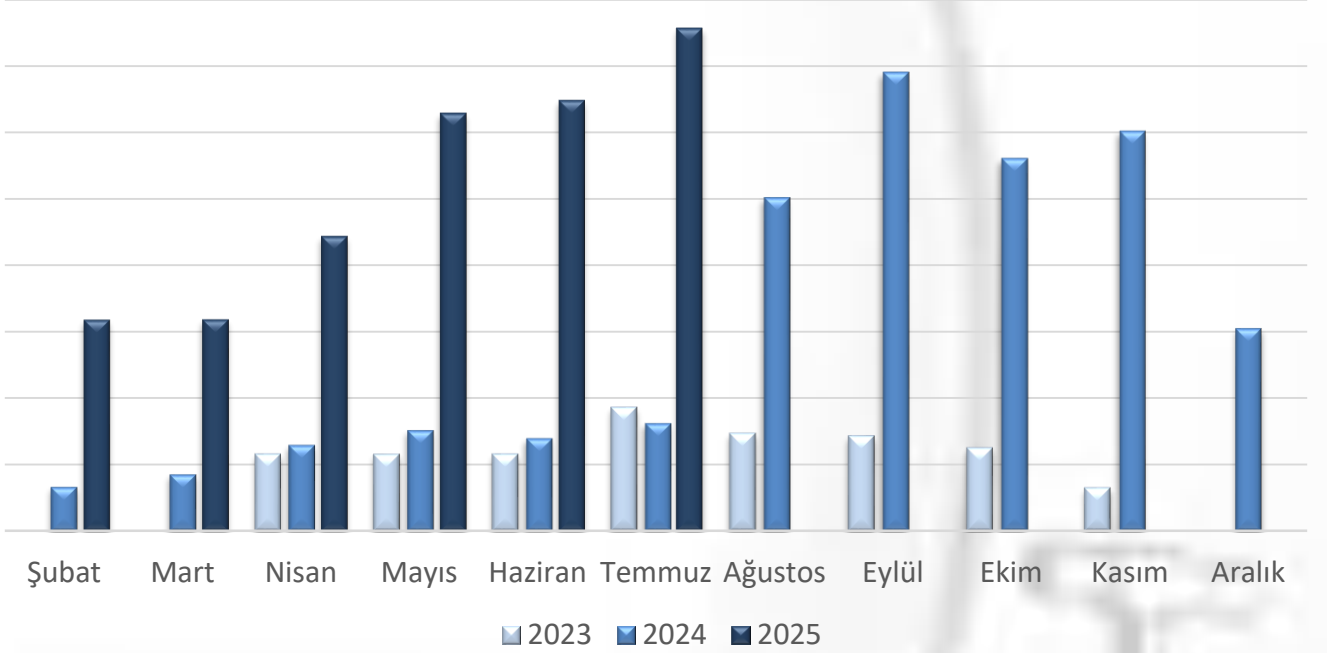
Knee controlled timed systems are used in production areas.



Our water consumption is monitored and recorded monthly and annually.

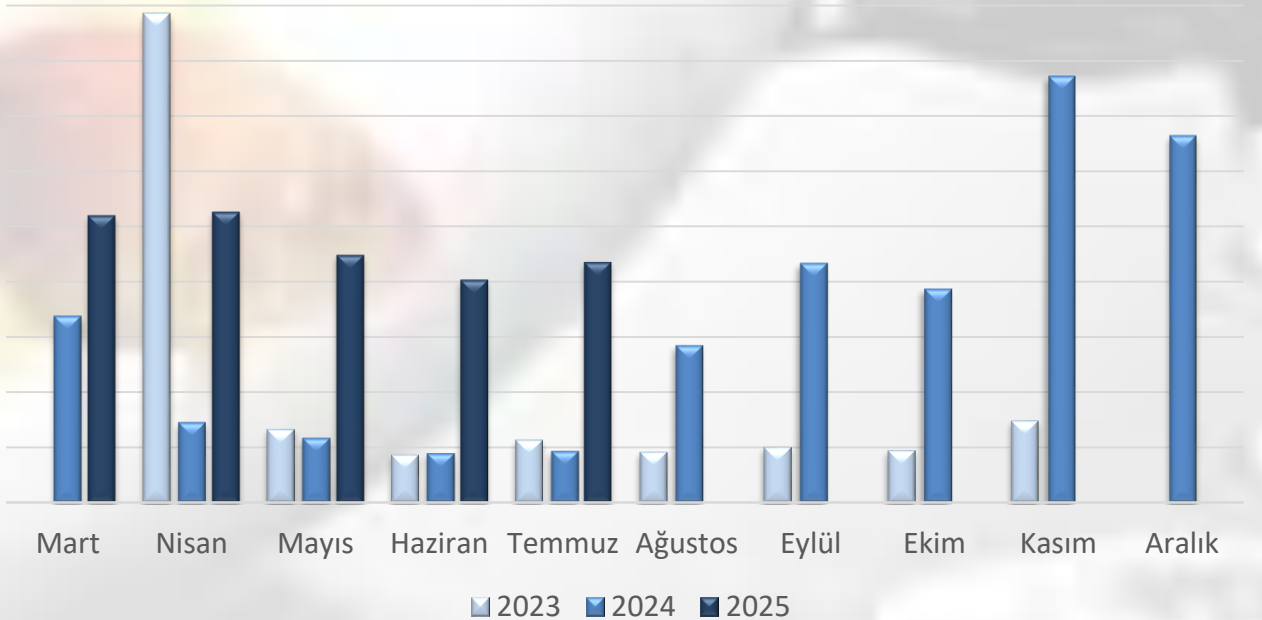
SAVING WATER

Water Consumption Lt. 2023-2024-2025



When comparing March, April, May, June and July of 2025 and 2024, there was 26% more water consumption per person compared to the previous year.

Water Consumption Per Person 2023-2024-2025



WASTE MANAGEMENT



We separate our waste at its source.

We conserve our resources by using reusable materials instead of single-use materials.



NO PLASTIC



To reduce paper consumption, we do our correspondence via e-mail and use double-sided papers.

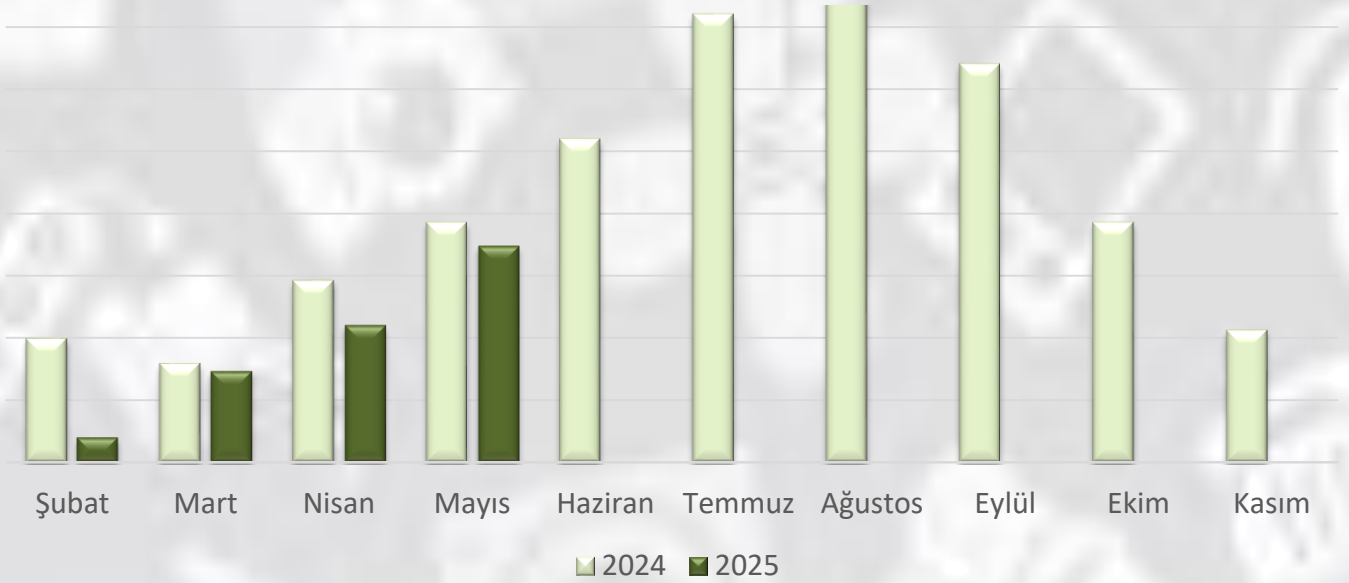
We encourage our guests and employees to participate in recycling programs.



We reduce packaging waste by purchasing large packaged and concentrated products.

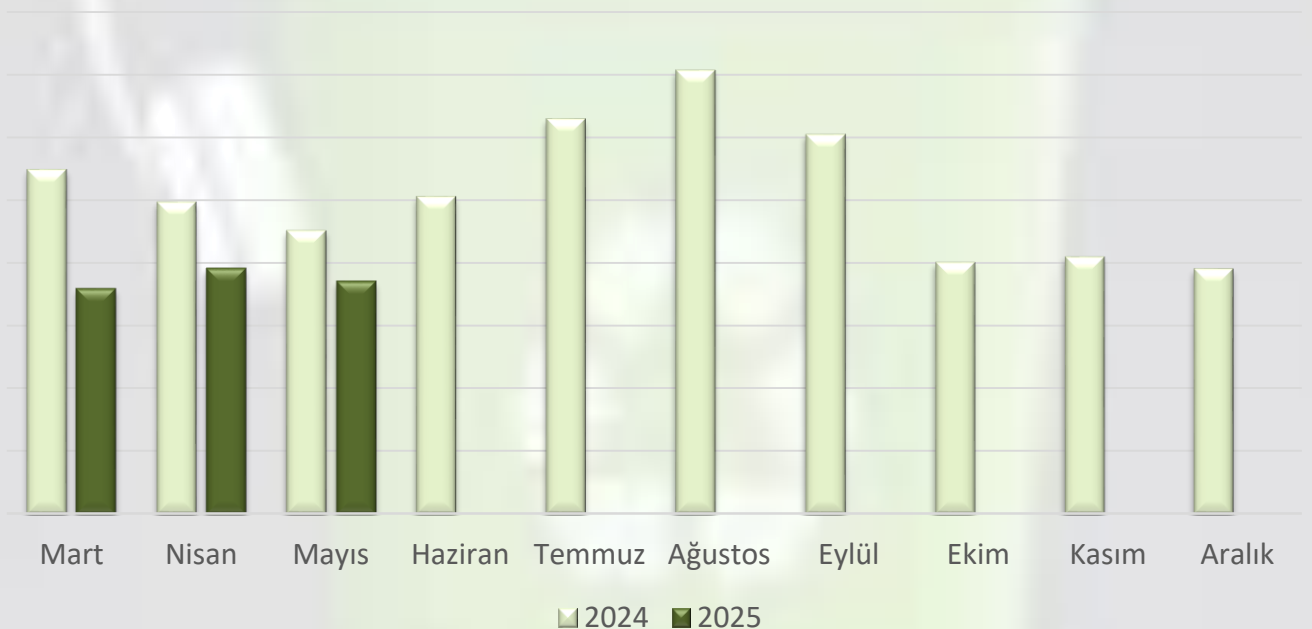
WASTE MANAGEMENT

Solid Wastes kg 2024-2025

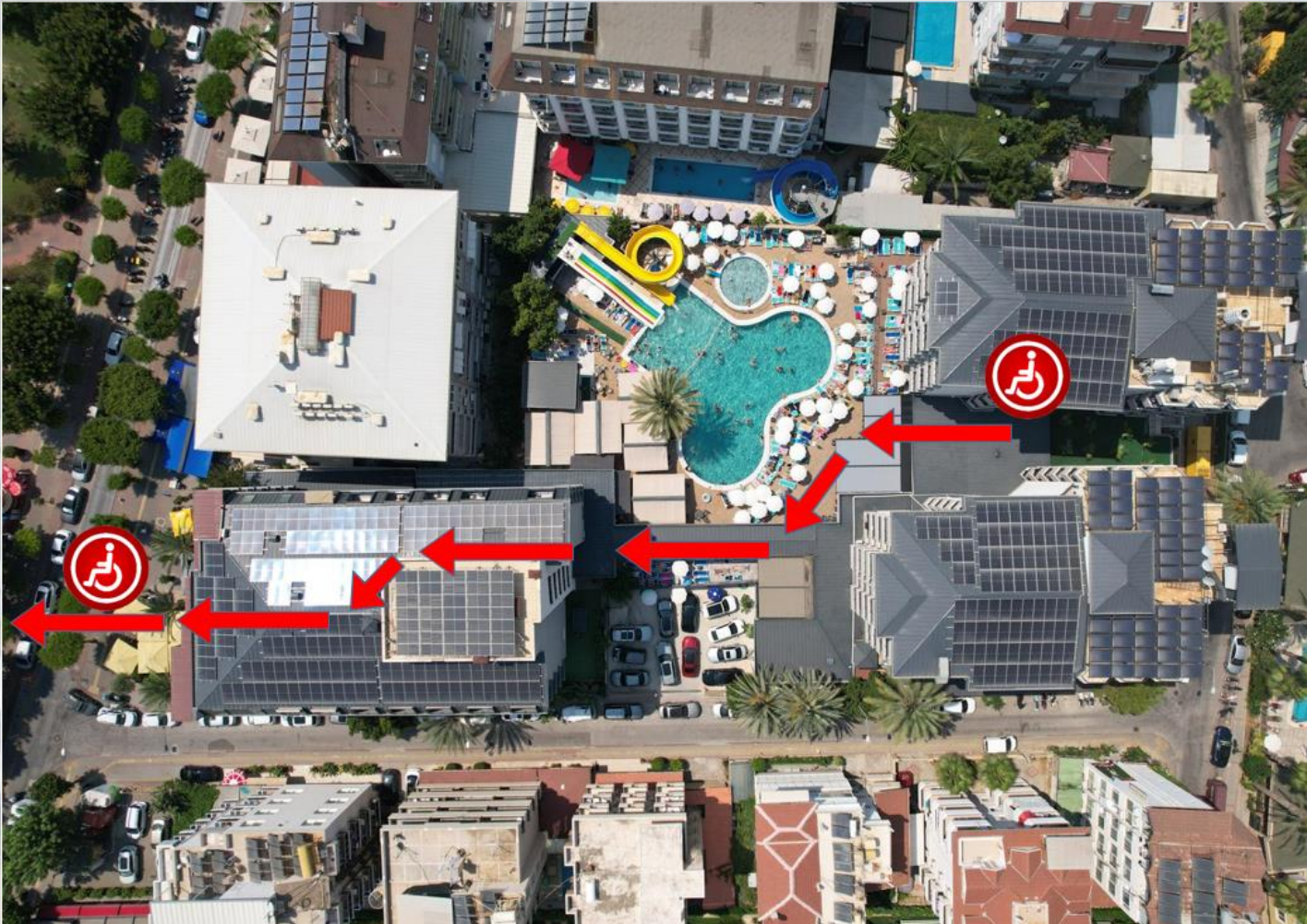


When comparing April and May of 2025 and 2024, a 24% saving per person was achieved compared to the previous year.

Solid Wastes Per Person 2024-2025



BARRIER-FREE LIFE



What we do to support accessibility at our hotel:

- We have two accessible rooms on the ground floor.
- Our hotel provides easy access to the beach, restaurants, pool, and bars using ramps.
- We have a poolside elevator.
- Our elevators are equipped with Braille.
- Our employees are committed to supporting accessibility for individuals with disabilities, and priority is given to them.

SOCIAL RESPONSIBILITY



Sayın **KAHYA HOTEL**

**Plastik Kapak Kampanyası'na katılarak
engelsiz bir yaşamı desteklediğiniz için
teşekkür ederiz.**

Semra ÇETİNKAYA
Yönetim Kurulu Başkanı



**As KAHYA HOTEL, we support barrier-free living by
participating in the «Plastic Lid Campaign».**

SOCIAL RESPONSIBILITY

If you would like to contribute to our nature and endangered species, you can donate by scanning the QR codes.



SOCIAL RESPONSIBILITY



GÖNÜLLÜ SERTİFİKASI

İnsanın yaşamı boyunca kişisel olarak tükettiği oksijeni üretmek için, 270 ağaç gerekmektedir. Kullandığı ağaç ürünleri ise ortalama 510 ağacın kesilmesine sebep olmaktadır. Her birey bu bilinç ve sorumluluk ile aldığı oksijeni, kullandığı ağaç ürünlerini kurtarmakla, yerine yenisini koyma çabasına girerse, daha yaşanabilir bir dünya olurdu.

Kıymetli gönüllümüz

KAHYA OTEL TUR. T.C.A.Ş.

Ağaçlandırma Adına Çalışma Derneği'ne "GÖNÜLLÜ" olarak farkındalık ve duyarlılıkta bulunmaktasınız. Ülkemize, tüm canlılara ve dünyamıza sağlık, güzellik olsun. Vesile olan her adım için, saadet huzur ve esenlik içinde güzel günler temenni ederiz. Sizlerin doğaya ve tüm canlılar için gayret edeceğinize, daha güzel bir ülke, yaşanabilir bir dünya olması için mücadele edeceğinize inancımız tamdır. Güzel bir doğa, temiz bir nefes, gelecek nesiller için mutlu yarınlar dileriz. **Ağaçlandırma Adına Çalışma Derneği.**

85 fidan, 300 Tohum adınıza toprakta buluşturuldu.



AĞAÇLANDIRMA ADINA ÇALIŞMA DERNEĞİ

Habip ŞANLI
Ağaçlandırma Adına Çalışma Derneği
Yönetim Kurulu Başkanı

30.05/2025



As Kahya Group Hotel, we donate saplings and seeds to the «Ağaç Derneği» every year.

SOCIAL RESPONSIBILITY



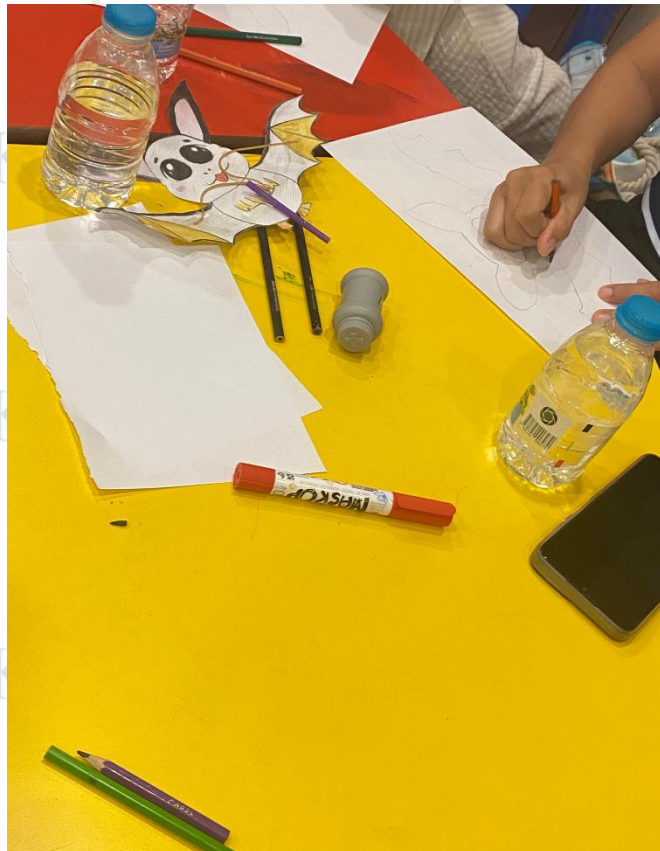
As Kahya Group Hotel, we support Alanya Belediyesi Spor.

OUR ACTIVITIES



As Kahya Hotel employees, we organized a beach cleaning event on 21.05.2025.

OUR ACTIVITIES



Recycling activities are carried out with our guest children at the Mini Club.

OUR ACTIVITIES



As Kahya Hotel, we celebrate Women's Day of all our women.

FROM OUR TRAININGS



FROM OUR TRAININGS



FROM OUR TRAININGS

KAHYA
HOTEL
★★★★

KAHYA
HOTEL
★★★★

KAHYA
HOTEL
★★★★

KAHYA
HOTEL
★★★★



KAHYA
HOTEL
★★★★

KAHYA
HOTEL
★★★★

KAHYA
HOTEL
★★★★

KAHYA
HOTEL
★★★★



KAHYA
HOTEL
★★★★

KAHYA
HOTEL
★★★★

KAHYA
HOTEL
★★★★

KAHYA
HOTEL
★★★★

OUR CERTIFICATES OF THANK YOU



**As Kahya Group Hotel, we supported the 19th
Alanya International Stone Sculpture
Symposium.**

SUPPORT TO LOCAL PEOPLE



As Kahya Group Hotel, we supported the "Bicycle Tournament" organized by Alanya Municipality.

SUPPORT FOR OUR EMPLOYEES



**As Kahya Group Hotel, we gave gift cards to all
our employees during Ramadan.**

SUPPORT FOR NATURAL LIFE



T.C.
ALANYA BELEDİYESİ
Veteriner İşleri Müdürlüğü



Sayı : E-69555512 - 622.01 - 131 - 23655
Konu : Teşekkür

17.06.2025

SAYIN KAHYA OTEL
kalite@kahya.com.tr

12.06.2025 tarihinde Alanya Belediyesi Sahipsiz Hayvan Gecici Bakımevi ve Sahipsiz Hayvanların Rehabilitasyonun da kullanılmak üzere yapmış olduğunuz 10 kg miktarındaki tekstil yardımı(cabıt ürünleri) ve bundan sonrada yapacağınız yardımlar için teşekkür ederiz.
Bilgilerinize rica ederim.

Ali YENİALP
Belediye Başkanı a.
Belediye Başkan Yardımcısı

As Kahya Group Hotel, we supported the Alanya Municipality Stray Animals Temporary Shelter.